

Ersatzteile Spare parts

Getriebe Bohr- Fräsmaschine

Gearbox drilling milling machine

OPTIdrill[®]
DH 40CT

Artikel Nr. *Part no.* 3034350

OPTIdrill[®]
DH 40CTP

Artikel Nr. *Part no.* 3034351



DH40CT



DH40CTP

1 Ersatzteile - Spare parts

1.1 Ersatzteilbestellung - Ordering spare parts

Bitte geben Sie folgendes an - *Please indicate the following* :

- Seriennummer - *Serial No.*
- Maschinenbezeichnung - *Machines name*
- Herstellungsdatum - *Date of manufacture*
- Artikelnummer - *Article no.*

Die Artikelnummer befindet sich in der Ersatzteilliste. *The article no. is located in the spare parts list.* Die Seriennummer befindet sich am Typschild. *The serial no. is on the rating plate.*

1.1.1 Wichtiger Hinweis - Important note

INFORMATION

Um Ihnen eine erfolgreiche Ersatzteilversorgung zu ermöglichen, ist es zwingend erforderlich die Seriennummer Ihrer Bohrmaschine zu erhalten. Ihre Bohrmaschine kann sich erheblich in diversen Teilen und deren Kompatibilität unterscheiden. Bitte haben Sie Verständnis dafür, dass ansonsten eine erfolgreiche Ersatzteilversorgung für Ihre Bohrmaschine nicht möglich ist.

In order to enable a successful spare parts supply, it is absolutely necessary to obtain the serial number of your drilling machine. Your drilling machine can differ considerably in various parts and their compatibility. Please understand that otherwise a successful spare parts supply for your drilling machine is not possible.



1.2 Hotline Ersatzteile - Spare parts Hotline



+49 (0) 951-96555 -118

ersatzteile@stuermer-maschinen.de



1.3 Service Hotline



+49 (0) 951-96555 -100

service@stuermer-maschinen.de



1.4 Spindelkopf - Drilling head - DH40 CT

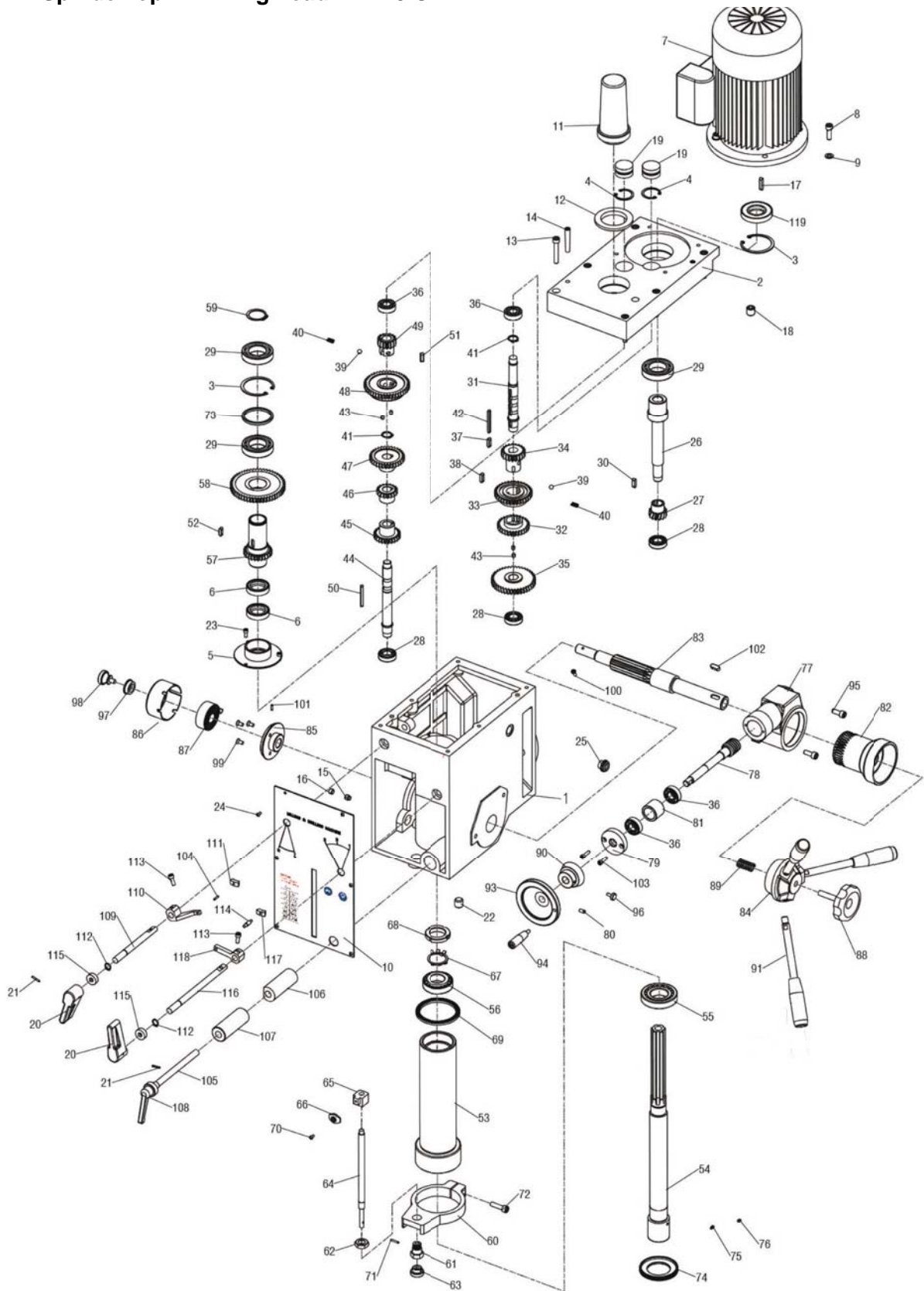


Abb. 1-1: Spindelkopf - Drilling head - DH40 CT

1.4.1 Ersatzteilliste Spindelkopf - Spare part list drilling head - DH40 CT

| DH 40 CT - Spindelkopf - drilling head | | | | | |
|--|------------------|----------------|-------|----------|---------------|
| Pos. | Bezeichnung | Designation | Menge | Grösse | Artikelnummer |
| | | | Qty. | Size | Item no. |
| 1 | Gehäuse | Housing | 1 | | |
| 2 | Abdeckung | Cover | 1 | | 0303434011 |
| 3 | Sicherungsring | Retaining ring | 2 | 62 | 042SR62I |
| 4 | Sicherungsring | Retaining ring | 2 | 35 | 042SR35I |
| 5 | Flansch | Flange | 1 | | 0303434017 |
| 6 | Dichtung | Seal | 2 | 45x35x10 | 041354510 |
| 7 | Motor | Motor | 1 | | 0303434034 |
| 8 | Schraube | Screw | 1 | M8x25 | |
| 9 | Scheibe | Washer | 1 | 8 | |
| 10 | Platte | Plate | 1 | | 03034350110 |
| 11 | Abdeckung | Cover | 1 | | 0303434079 |
| 12 | Abdeckung | Cover | 1 | | 03034350112 |
| 13 | Schraube | Screw | 6 | M8x45 | |
| 14 | Stift | Pin | 2 | 8x40 | |
| 15 | Schraube | Screw | 1 | M10x10 | |
| 16 | Schraube | Screw | 1 | M10x8 | |
| 17 | Passfeder | Fitting key | 1 | 6x28 | 042P6628 |
| 18 | Bolzen | Bolt | 1 | 3/8" | |
| 19 | Stopfen | Cap | 2 | | |
| 20 | Schalthebel | Speed lever | 2 | | 03034350120 |
| 21 | Stift | Pin | 2 | 3x18 | |
| 22 | Ölablassschraube | Oil plug | 1 | 3/8" | |
| 23 | Schraube | Screw | 3 | M5x10 | |
| 24 | Schraube | Screw | 6 | M4x8 | |
| 25 | Ölschauglas | Oil pointer | 1 | M18x1.5 | 0343029 |
| 26 | Welle | Shaft | 1 | | 0303434032 |
| 27 | Zahnrad | Gear | 1 | Z14 | 03034340113 |
| 28 | Kugellager | Kugellager | 3 | 6003 | 0406003R |
| 29 | Kugellager | Kugellager | 3 | 6007 | 0406007R |
| 30 | Passfeder | Fitting key | 1 | 5x25 | 042P5530 |
| 31 | Welle | Shaft | 1 | | 0303434027 |
| 32 | Zahnrad | Gear | 1 | Z29 | 0303434096 |
| 33 | Zahnrad | Gear | 1 | Z35 | 0303434085 |
| 34 | Zahnrad | Gear | 1 | Z21 | 0303434082 |
| 35 | Zahnrad | Gear | 1 | Z41 | 03034340110 |
| 36 | Kugellager | Ball bearing | 4 | 6202 | 0406202R |
| 37 | Passfeder | Fitting key | 1 | 6x14 | 042P6614 |
| 38 | Passfeder | Fitting key | 1 | 6x28 | 042P6628 |
| 39 | Stahlkugel | Steel ball | 2 | 8 | 042KU08 |
| 40 | Feder | Spring | 2 | | |
| 41 | Sicherungsring | Retaining ring | 2 | 18 | 042SR18W |
| 42 | Passfeder | Fitting key | 1 | 5x50 | 042P5550 |

| | | | | | |
|-----|------------------|--------------------|---|---------|---------------|
| 43 | Schraube | Screw | 4 | M6x12 | |
| 44 | Welle | Shaft | 1 | | 0303434020 |
| 45 | Zahnrad | Gear | 1 | Z25 | 0303434081 |
| 46 | Zahnrad | Gear | 1 | Z18 | 0303434078 |
| 47 | Zahnrad | Gear | 1 | Z32 | 0303434058 |
| 48 | Zahnrad | Gear | 1 | Z43 | 0303434041 |
| 49 | Zahnrad | Gear | 1 | Z16 | 0303434030 |
| 50 | Passfeder | Fitting key | 1 | 5x50 | 042P5550 |
| 51 | Passfeder | Fitting key | 1 | 6x18 | 042P6618 |
| 52 | Passfeder | Fitting key | 1 | 6x18 | 042P6618 |
| 53 | Pinole | Spindle sleeve | 1 | | 0303434002 |
| CPL | Pinole komplett | Sleeve komplett | 1 | | 0303434002CPL |
| 54 | Spindel | Spindle | 1 | | 0303434005 |
| 55 | Kegelrollenlager | Taper ball bearing | 1 | 30207 | 04030207 |
| 56 | Kegelrollenlager | Taper ball bearing | 1 | 30206 | 04030206 |
| 57 | Zahnwelle | Gear shaft | 1 | | 0303434010 |
| 58 | Zahnrad | Gear | 1 | Z53 | 0303434022 |
| 59 | Sicherungsring | Retaining ring | 1 | 35 | 042SR35I |
| 60 | Gehäuse | Feed base | 1 | | 0303434059 |
| 61 | Buchse | Support base | 1 | | 0303434061 |
| 62 | Sechskantmutter | Nut | 1 | | |
| 63 | Knopf | Knob | 1 | | 0303434066 |
| 64 | Welle | Graduated rod | 1 | | 0303434063 |
| 65 | Spindelmutter | Fixed bolt | 1 | | 0303434064 |
| 66 | Zeiger | Scale board | 1 | | |
| 67 | Sicherungsblech | Lock washer | 1 | 30 | |
| 68 | Nutmutter | Lock nut | 1 | M30x1.5 | |
| 69 | Dichtung | Rubber washer | 1 | | 0303434003 |
| 70 | Schraube | Screw | 1 | M4x8 | |
| 71 | Stift | Split pin | 1 | 3x18 | |
| 72 | Bolzen | Bolt | 1 | M8x30 | |
| 73 | Ring | Separating ring | 1 | | |
| 74 | Lagerdeckel | Bearing cover | 1 | | 0303434006 |
| 75 | Schraube | Screw | 1 | M5x6 | |
| 76 | Stift | Pin | 1 | M5x4 | |
| 77 | Gehäuse | Worm wheel box | 1 | | 0303434035 |
| 78 | Schneckenwelle | Worm shaft | 1 | | 0303434050 |
| 79 | Schneckengehäuse | Worm cover | 1 | | 0303434051 |
| 80 | Schraube | Screw | 1 | M6x12 | |
| 81 | Ring | Separating ring | 1 | | |
| 82 | Schneckenrad | Worm wheel | 1 | | 0303434044 |
| 83 | Welle | Pinion shaft | 1 | | 0303434037 |
| 84 | Aufnahme | Collet | 1 | | 0303434045 |
| 85 | Federplatte | Spring base | 1 | | 0303434036 |
| 86 | Federabdeckung | Spring cap | 1 | | 03034350186 |
| 87 | Rückholfeder | Spring | 1 | | 0303434040 |

DH40CT_DH40CTP_parts.fm

| | | | | | |
|-----|------------------------|-----------------------------|---|--------------------|---------------|
| 88 | Griffschraube | Screw | 1 | | 0303434048 |
| 89 | Feder | Compression spring | 1 | | 03034340103 |
| 90 | Skala | Graduated plate | 1 | | 0303434052 |
| 91 | Hebel | Handle rod | 1 | | 03338430227 |
| 93 | Handrad | Handle wheel | 1 | | 0303434049 |
| 94 | Handhebel | Handle rod | 1 | | 0303434053 |
| 95 | Schraube | Screw | 2 | M8x25 | |
| 96 | Schraube | Screw | 1 | | |
| 97 | Scheibe | Washer | 1 | | |
| 98 | Schraube | Screw | 1 | | |
| 99 | Schraube | Screw | 3 | M6x12 | |
| 100 | Schraube | Screw | 1 | M5x12 | |
| 101 | Stift | Pin | 2 | 3x12 | |
| 102 | Passfeder | Fitting key | 1 | 8x20 | 042P8820 |
| 103 | Schraube | Screw | 2 | M5x20 | |
| 104 | Stift | Pin | 1 | 3x15 | |
| 105 | Klemmschraube | Fixed bolt | 1 | | 030343501105 |
| 106 | Klemmhülse | Fixed tight block | 1 | | 030343501106 |
| 107 | Klemmhülse | Fixed tight block | 1 | | 030343501107 |
| 108 | Einstellhebel | Adjust handle | 1 | | 030343501108 |
| 109 | Welle | Lever shaft | 1 | | 030343501109 |
| 110 | Hebel | Lever | 1 | | 030343501110 |
| 111 | Halterung | Lever bracket | 1 | | 030343501111 |
| 112 | Sicherungsring | Retaining ring | 2 | 12 | 042SR12W |
| 113 | Schraube | Screw | 2 | M6x16 | |
| 114 | Welle | Lever rod | 1 | | 030343501114 |
| 115 | Dichtung | Oil seal | 2 | 12x22x8 | |
| 116 | Welle | Long lever shaft | 1 | | 030343501116 |
| 117 | Halterung | Lever bracket | 1 | | 030343501117 |
| 118 | Hebel | Lever | 1 | | 030343501118 |
| 119 | Dichtung | Oil seal | 1 | 35x62x10 | 041356210 |
| 129 | Innensechskantschraube | Socket head screw | 1 | GB 70-85 - M6 x 10 | |
| 130 | Scheibe | Washer | 1 | | |
| 131 | Innensechskantschraube | Socket head screw | 2 | GB 70-85 - M6 x 16 | |
| 132 | Rändelschraube | Knurled screw | 1 | | |
| 133 | Halterung | Fixture | 1 | | 0302024149CPL |
| 134 | Mikroschalter | Microswitch | 1 | | |
| 135 | Platte | Plate | 1 | | |
| 136 | Alu- Profil | Aluminium profile | 1 | | 0302028351 |
| 137 | Bohrfutterschutz | Drill chuck protection | 1 | | 03334403PG |
| 138 | Schraube | Screw | 2 | GB819-85/M5x8 | |
| 139 | Blende | Lable | 1 | | 03034501139 |
| 140 | Gehäuse | Housing | 1 | | 03020440140 |
| 141 | Klemmschraube | Clamping screw | 1 | | 03020440141 |
| 0 | Bohrfutterschutz kpl | Drill chuck protection cpl. | 1 | | 03334403170 |

1.5.1 Ersatzteilliste Spindelkopf - Spare part list drilling head - DH40 CTP

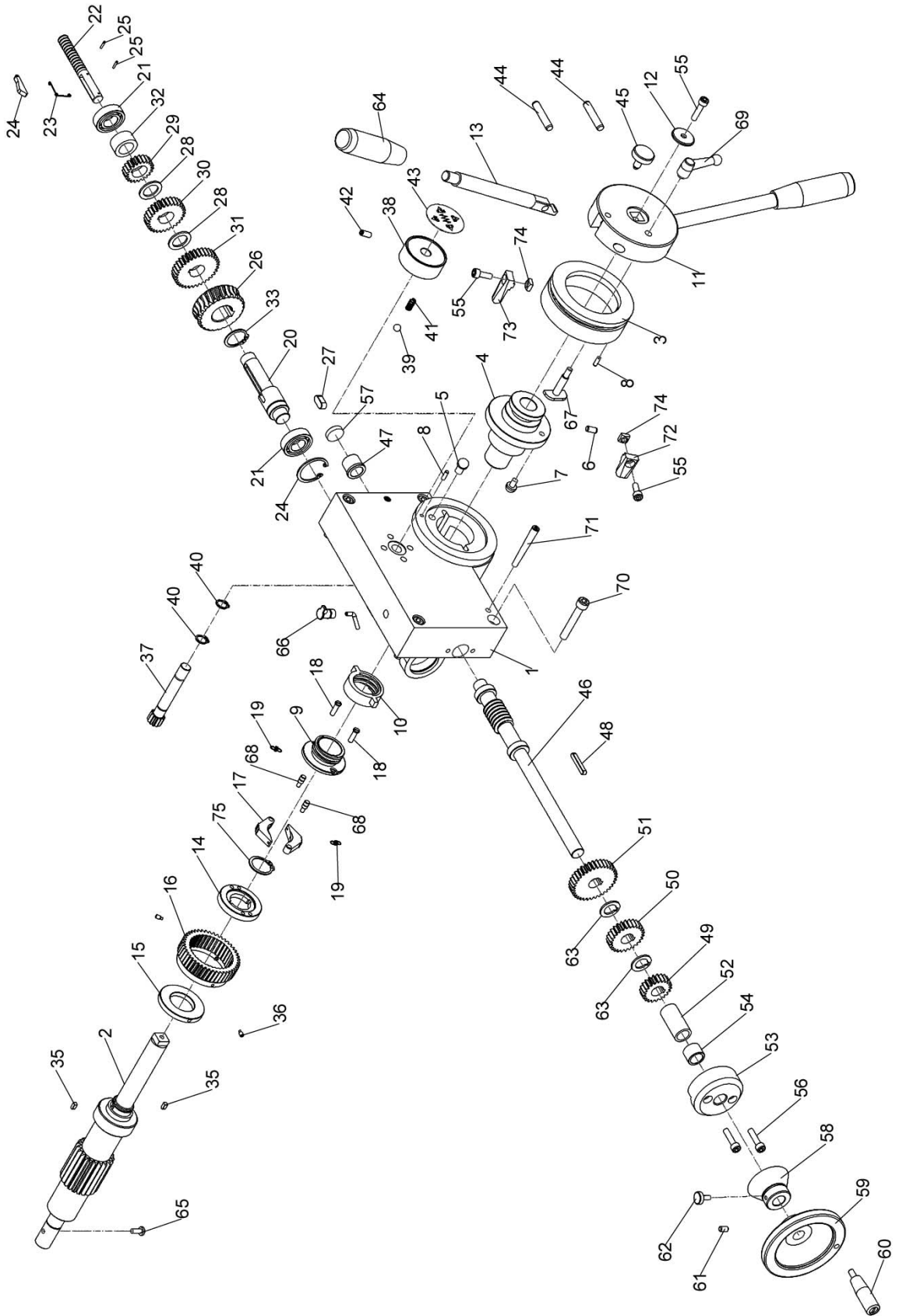
| DH 40 CTP - Spindelkopf - drilling head | | | | | |
|---|-------------------------------------|-----------------------|-------|------------|---------------|
| Pos. | Bezeichnung | Designation | Menge | Grösse | Artikelnummer |
| | | | Qty. | Size | Item no. |
| 1 | Kopfgehäuse | Head body | 1 | 20010B | 03034351021 |
| 2 | Kopfabdeckung | Head body cover | 1 | 20011B | 03034351022 |
| 3 | Sicherungsring | Retaining ring | 2 | 62 | 03034351023 |
| 4 | Sicherungsring | Retaining ring | 2 | 35 | 03034351024 |
| 5 | Basisdurchführung | Airtight base | 1 | 20018B | 03034351025 |
| 6 | Durchführungsring | Airtight ring | 2 | FB45x35x10 | 03034351026 |
| 7 | Motor | Motor | 1 | | 03034351027 |
| 8 | Schraube | Screw | 1 | M8x25 | |
| 9 | Unterlegscheibe | Washer | 1 | 8 | |
| 10 | Platte | Plate | 1 | 20201 | 030343510210 |
| 11 | Abdeckung Anzugsstange | Arbor bolt cover | 1 | 20304-1B | 030343510211 |
| 12 | Grundscheibe Abdeckung Anzugsstange | Arbor bolt cover base | 1 | 20304-2B | 030343510212 |
| 13 | Schraube | Screw | 6 | M8x45 | |
| 14 | Stift | Pin | 2 | 8x40 | 030343510214 |
| 15 | Schraube | Screw | 1 | M10x10 | |
| 16 | Schraube | Screw | 1 | M10x8 | |
| 17 | Passfeder | Key | 1 | 8x28 | 030343510217 |
| 18 | schraube | Bolt | 1 | ZG3/8 | 030343510218 |
| 19 | Kappe | Cap | 2 | 20020B | 030343510219 |
| 20 | Geschwindigkeitshebel | Speed lever | 2 | 20307B | 030343510220 |
| 21 | Stift | Pin | 2 | 3x18 | 030343510221 |
| 22 | Ölverschluss | Oil plug | 1 | ZG3/8 | 030343510222 |
| 23 | Schraube | Screw | 3 | M5x10 | |
| 24 | Schraube | Screw | 6 | M4x8 | |
| 25 | Öl Zeiger | Oil pointer | 1 | M18x1.5 | |
| 26 | I Welle | I shaft | 1 | 20105B | 030343510226 |
| 27 | Zahnrad | Gear | 1 | 20105-1-B | 030343510227 |
| 28 | Lager | Bearing | 3 | 6003 | 030343510228 |
| 29 | Lager | Bearing | 3 | 6007 | 030343510229 |
| 30 | Passfeder | Key | 1 | 5x25 | 030343510230 |
| 31 | II Welle | II shaft | 1 | 20106B | 030343510231 |
| 32 | Zahnrad | Gear | 1 | 20108-B | 030343510232 |
| 33 | Zahnrad | Gear | 1 | 20110-1-B | 030343510233 |
| 34 | Zahnrad | Gear | 1 | 20111-B | 030343510234 |
| 35 | Zahnrad | Gear | 1 | 20106-1-B | 030343510235 |
| 36 | Lager | Bearing | 2 | 6202 | 030343510236 |
| 37 | Passfeder | Key | 1 | 6x14 | 030343510237 |
| 38 | Passfeder | Key | 1 | 6x28 | 030343510238 |
| 39 | Kugel | Ball | 2 | 8 | 030343510239 |
| 40 | Feder | Spring | 2 | | 030343510240 |
| 41 | Sicherungsring | Retaining ring | 2 | 18 | 030343510241 |
| 42 | Passfeder | Key | 1 | 5x50 | 030343510242 |

| | | | | | |
|-----|---------------------|-------------------|---|-----------|---------------|
| 43 | schraube | Screw | 4 | M6x8 | |
| 44 | III Welle | III shaft | 1 | 20107B | 030343510244 |
| 45 | Zahnrad | Gear | 1 | 20109-B | 030343510245 |
| 46 | Zahnrad | Gear | 1 | 20110-2-B | 030343510246 |
| 47 | Zahnrad | Gear | 1 | 20112-B | 030343510247 |
| 48 | Zahnrad | Gear | 1 | 20113-B | 030343510248 |
| 49 | Zahnrad | Gear | 1 | 20115-B | 030343510249 |
| 50 | Passfeder | Key | 1 | 5x50 | 030343510250 |
| 51 | Passfeder | Key | 1 | 6x18 | 030343510251 |
| 52 | Passfeder | Key | 1 | 6x75 | 030343510252 |
| 53 | Pinole | Spindle sleeve | 1 | 20019 | 030343510253 |
| 54 | Spindel | Spindle | 1 | 20104B | 030343510254 |
| 55 | Lager | Bearing | 1 | | 030343510255 |
| 56 | Lager | Bearing | 1 | | 030343510256 |
| 57 | Verzahnnte Hülse | Splined sleeve | 1 | 20114-B | 030343510257 |
| 58 | Zahnrad | Gear | 1 | 20116-B | 030343510258 |
| 59 | Sicherungsring | Retaining ring | 1 | 35 | 030343510259 |
| 60 | Vorschubbasis | Feed base | 1 | 20012 | 030343510260 |
| 61 | Unterstützungsbasis | Support base | 1 | 20128 | 030343510261 |
| 62 | Mutter | Nut | 1 | 20129 | 030343510262 |
| 63 | Knopf | Knob | 1 | 20130 | 030343510263 |
| 64 | Messstab | Graduated rod | 1 | 20131 | 030343510264 |
| 65 | Feste Schraube | Fixed bolt | 1 | 20021 | 030343510265 |
| 66 | Skalenplatte | Scale board | 1 | 20132 | 030343510266 |
| 67 | Sicherungsscheibe | Lock washer | 1 | 30 | 030343510267 |
| 68 | Sicherungsmutter | Lock nut | 1 | M30x1.5 | 030343510268 |
| 69 | Gummscheibe | Rubber washer | 1 | 20308 | 030343510269 |
| 70 | Schraube | Screw | 1 | M4x8 | |
| 71 | Splint | Split pin | 1 | 3x18 | |
| 72 | schraube | Bolt | 1 | M8x30 | |
| 73 | Trennring | Separating ring | 1 | 20024B | 030343510273 |
| 74 | Öldichte Abdeckung | Oil tight cover | 1 | 20133B | 030343510274 |
| 75 | Passfeder | key | 1 | 6X18 | 030343510275 |
| 85 | Federgehäuse | Spring base | 1 | 20118 | 030343510285 |
| 86 | Federteller | Spring cap | 1 | 20123 | 030343510286 |
| 87 | Federplatte | Spring plate | 1 | 20122 | 030343510287 |
| 97 | Unterlegscheibe | Washer | 1 | 203063 | 030343510297 |
| 98 | schraube | Bolt | 1 | 203066 | 030343510298 |
| 100 | Schraube | Screw | 3 | M6x12 | |
| 101 | Stift | Pin | 2 | 3x12 | 0303435102101 |
| 104 | Stift | Pin | 1 | 3x15 | 0303435102104 |
| 105 | Feste Schraube | Fxed bolt | 1 | 20124B | 0303435102105 |
| 106 | fester enger Block | Fixed tight block | 1 | 20203B | 0303435102106 |
| 107 | fester enger Block | Fixed tight block | 1 | 20202B | 0303435102107 |
| 108 | Stellgriff | Adjust handle | 1 | | 0303435102108 |
| 109 | Hebelwelle | Llever shaft | 1 | 20125B | 0303435102109 |
| 110 | Hebel | Lever | 1 | 2022-1B | 0303435102110 |
| 111 | Hebelhalterung | Lever bracket | 1 | 20204-2B | 0303435102111 |

DH40CT_DH40CTP_parts.fm

| | | | | | |
|-----|-----------------------|------------------|---|-----------|---------------|
| 112 | Sicherungsring | Retaining ring | 2 | 12 | 0303435102112 |
| 113 | Schraube | Screw | 2 | M6x16 | |
| 114 | Hebelstange | Lever rod | 1 | 20204-3B | 0303435102114 |
| 115 | Öldichtung | Oil seal | 2 | 12x22x8 | 0303435102115 |
| 116 | Lange Hebelwelle | Long lever shaft | 1 | 20216B | 0303435102116 |
| 117 | Hebelhalterung | Lever bracket | 1 | 20204-1B | 0303435102117 |
| 118 | Hebel | Lever | 1 | 20022-2B | 0303435102118 |
| 119 | Lager | Bearing | 1 | 6201 | 0303435102119 |
| 120 | Sicherungsring | Retaining ring | 2 | 12 | 0303435102120 |
| 121 | Unterlegscheibe | Washer | 1 | 12 | 0303435102121 |
| 122 | Feder | Spring | 1 | 20209 | 0303435102122 |
| 123 | Schneckenwelle | Worm shaft | 1 | 20207A | 0303435102123 |
| 124 | Lager | Bearing | 1 | 51101 | 0303435102124 |
| 125 | Kupplungsbasis | Clutch base | 1 | 20208B | 0303435102125 |
| 126 | Schraube | Screw | 1 | M4x5 | |
| 127 | Aussperrung | Locked out | 1 | M22x1.5 | 0303435102127 |
| 128 | Feder | Spring | 1 | 20205B | 0303435102128 |
| 129 | Sicherungsring | Retaining ring | 3 | 15 | 0303435102129 |
| 130 | Unterlegscheibe | Washer | 2 | 20108A | 0303435102130 |
| 131 | Öldichtung | oil seal | 2 | FB15x32x7 | 0303435102131 |
| 132 | Feste Hülse | Fixed sleeve | 1 | 20103A | 0303435102132 |
| 133 | Lager | bearing | 1 | 6002 | 0303435102133 |
| 134 | I Welle | I shaft | 1 | 20213A | 0303435102134 |
| 135 | Passfeder | key | 2 | 4x16 | 0303435102135 |
| 136 | Passfeder | key | 1 | 5x30 | 0303435102136 |
| 137 | Lager | bearing | 1 | 51103 | 0303435102137 |
| 138 | Flansch | flange | 1 | 20104A | 0303435102138 |
| 139 | Schraube | screw | 3 | M5x16 | |
| 140 | Sicherungsring | retaining ring | 1 | 17 | 0303435102140 |
| 141 | Zahnrad | gear | 1 | 20212A | 0303435102141 |
| 142 | Pinole | quill | 1 | 20109A | 0303435102142 |
| 143 | Hebelwelle | lever shaft | 1 | 20214A | 0303435102143 |
| 144 | O-Luftdicht | O-airtight | 1 | 12x2.4 | 0303435102144 |
| 145 | Flanschdeckel | flange cover | 1 | 20250 | 0303435102145 |
| 146 | Schraube | screw | 2 | M3x8 | |
| 147 | Sicherungsring | retaining ring | 1 | 12 | 0303435102147 |
| 148 | Stahlkugel | steel ball | 1 | 8 | 0303435102148 |
| 149 | Feder | spring | 1 | | 0303435102149 |
| 150 | Schraube | screw | 1 | M6x18 | |
| 151 | Geschwindigkeitshebel | speed lever | 1 | 20201 | 0303435102151 |
| 152 | Label | label | 1 | 20303 | 0303435102152 |

1.6 Pinolenvorschub - Spindle sleeve feed - DH40 CTP



DH40CT_DH40CTP_parts.fm

1.6.1 Ersatzteilliste Pinolenvorschub - Spare part list spindle sleeve feed - DH40 CTP

| DH 40CTP - Pinolenvorschub - Spindle sleeve feed | | | | | |
|--|-----------------------------|-----------------------|-------|---------|---------------|
| Pos. | Bezeichnung | Designation | Menge | Grösse | Artikelnummer |
| | | | Qty. | Size | Item no. |
| 1 | Vorschubkasten | Feed box | 1 | 20102 | 03034351011 |
| 2 | verzahnte Welle | Pinion shaft | 1 | 20234 | 03034351012 |
| 3 | Spindelhub-Zifferblatt | Spindle stroke dial | 1 | 20243 | 03034351013 |
| 4 | Kupplungsbuchsen-set | Clutch bushing set | 1 | 20242 | 03034351014 |
| 5 | Sicherungsstift | Backing pin | 1 | 20241 | 03034351015 |
| 6 | Stift | Pin | 1 | 6 x 12 | 03034351016 |
| 7 | Kugelpfostift | Ball head pin | 1 | 20247 | 03034351017 |
| 8 | Stift | Pin | 2 | 4 x 10 | 03034351018 |
| 9 | Quadratische Gewindeeinheit | Square thread set | 1 | 20239 | 03034351019 |
| 10 | Vierkantgewindemutter | Square thread nut | 1 | 20240 | 030343510110 |
| 11 | Griffkörper | Handle body | 1 | 20244 | 030343510111 |
| 12 | Unterlegscheibe | Washer | 1 | 20245 | 030343510112 |
| 13 | Griff | Handle | 2 | 20203 | 030343510113 |
| 14 | Basiskupplungssatz | Clutch key base set | 1 | 20237 | 030343510114 |
| 15 | Buchse | Bush | 1 | 20236-2 | 030343510115 |
| 16 | Schneckenrad | Worm gear | 1 | 20236-1 | 030343510116 |
| 17 | Kupplungsschraubensatz | Clutch screw set | 2 | 20231 | 030343510117 |
| 18 | Schraube | Screw | 2 | 20235 | 030343510118 |
| 19 | Feder | Spring | 2 | 20232 | 030343510119 |
| 20 | II Welle | II shaft | 1 | 20223 | 030343510120 |
| 21 | Lager | Bearing | 2 | 6003 | 030343510121 |
| 22 | Schalthebelsatz | Change gear lever set | 1 | 20215 | 030343510122 |
| 23 | Feder | Spring | 1 | 20220 | 030343510123 |
| 24 | Zugschlüssel | Pull key | 1 | 20222 | 030343510124 |
| 25 | Stift | Pin | 2 | 2 x 10 | 030343510125 |
| 26 | Schneckenrad | Worm gear | 1 | 20304 | 030343510126 |
| 27 | Passfeder | Key | 1 | 8 x 16 | 030343510127 |
| 28 | Buchse | Bushing | 2 | 20217 | 030343510128 |
| 29 | Zahnrad | Gear | 1 | 20218 | 030343510129 |
| 30 | Zahnrad | Gear | 1 | 20219 | 030343510130 |
| 31 | Zahnrad | Gear | 1 | 20221 | 030343510131 |
| 32 | Haltebuchse | Bushing bracket | 1 | 20216 | 030343510132 |
| 33 | Sicherungsring | Retainer ring | 2 | 24 | 030343510133 |
| 34 | Sicherungsring | Retainer ring | 1 | 35 | 030343510134 |
| 35 | Passfeder | Key | 2 | 4 x 8 | 030343510135 |
| 36 | schraube | Screw | 3 | M4 x 12 | |
| 37 | Zahnrad | Gear | 1 | 20202 | 030343510137 |
| 38 | Geschwindigkeitshebel | Speed lever | 1 | 20201 | 030343510138 |
| 39 | Stahlkugel | Steel ball | 1 | 8 | 030343510139 |
| 40 | Sicherungsring | Retainer ring | 2 | 12 | 030343510140 |
| 41 | Feder | Spring | 1 | | 030343510141 |
| 42 | Schraube | Screw | 1 | M6 x 20 | |

| | | | | | |
|----|-------------------------|-----------------|---|---------|--------------|
| 43 | Platte | Plate | 1 | 20303 | 030343510143 |
| 44 | Stift | pin | 2 | 20206 | 030343510144 |
| 45 | Begrenzungsschraube | Limited screw | 1 | 20204 | 030343510145 |
| 46 | Schneckenwelle | Worm shaft | 1 | 20233 | 030343510146 |
| 47 | Buchse | Bush | 1 | 20306 | 030343510147 |
| 48 | Passfeder | Key | 1 | | 030343510148 |
| 49 | Zahnrad | Gear | 1 | 20228 | 030343510149 |
| 50 | Zahnrad | Gear | 1 | 20229 | 030343510150 |
| 51 | Zahnrad | Gear | 1 | 20230 | 030343510151 |
| 52 | Buchse | Bush | 1 | 20106 | 030343510152 |
| 53 | Abdeckung Schneckenrad | Worm cover | 1 | 20227 | 030343510153 |
| 54 | Buchse | Bush | 1 | 20305 | 030343510154 |
| 55 | Schraube | Screw | 2 | M6 x 12 | |
| 56 | Schraube | Screw | 2 | M6 x 25 | |
| 57 | Platte | Plate | 1 | 20107 | 030343510157 |
| 58 | Skalenring Feinvorschub | Mirco feed dial | 1 | 20226 | 030343510158 |
| 59 | Handrad | Hand wheel | 1 | 20105 | 030343510159 |
| 60 | Griff | Hand | 1 | | 030343510160 |
| 61 | Schraube | Screw | 1 | M5 x 8 | |
| 62 | Sicherungsschraube | Locked screw | 1 | M5 x 12 | 030343510162 |
| 63 | Buchse | Bushing | 1 | 20307 | 030343510163 |
| 64 | Knopf | Knob | 2 | 20301 | 030343510164 |
| 65 | Schraube | Screw | 1 | M5 x 12 | |
| 66 | Öler | Oil cup | 1 | | 030343510166 |
| 67 | Schraube | Screw | 1 | 20246 | 030343510167 |
| 68 | Stift | Pin | 2 | 20308 | 030343510168 |
| 69 | Klemmgriff | Locked handle | 1 | | 030343510169 |
| 70 | Schraube | Screw | 4 | M8 x 50 | |
| 71 | Kegelstift | Taper pin | 2 | 6 x 60 | 030343510171 |
| 72 | Gliederanschlag | link stopper | 1 | 20243.1 | 030343510172 |
| 73 | Gliederanschlag | link stopper | 1 | 20243.2 | 030343510173 |
| 74 | Schraube | Screw | 2 | M6 x 16 | |
| 75 | Sicherungsring | Retainer ring | 1 | 24 | 030343510175 |

1.7 Bohrfutterschutz - Drilling chuck protection

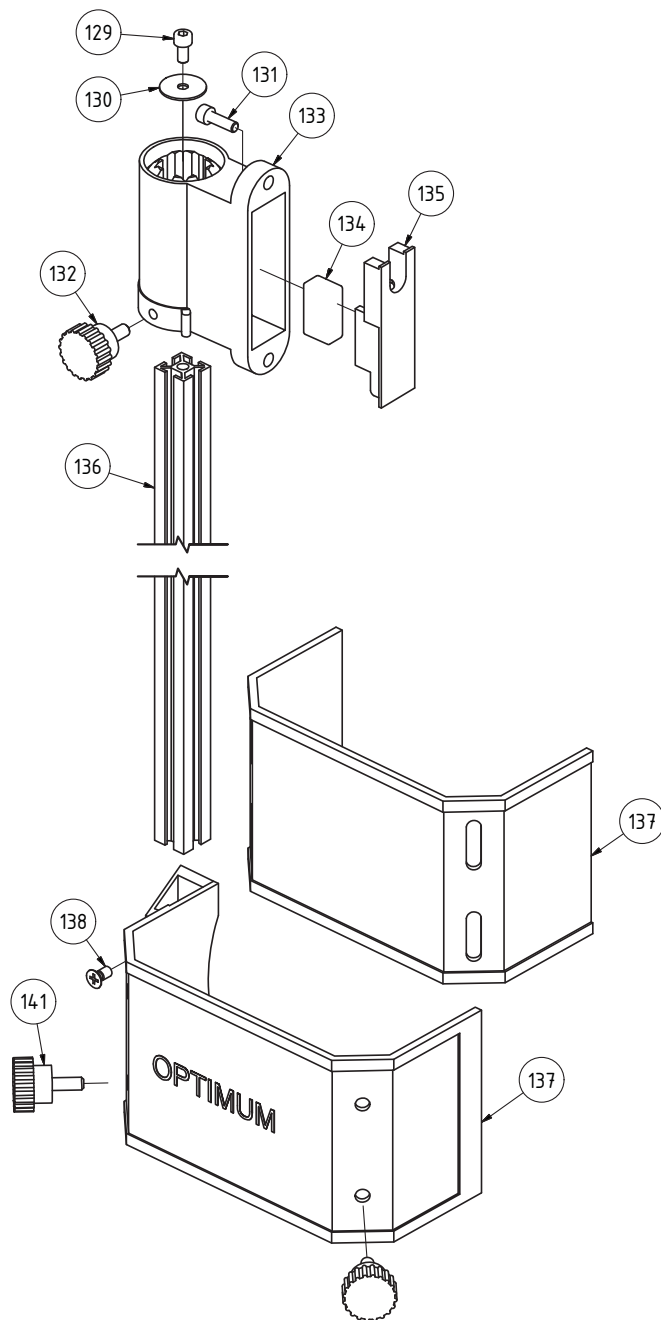


Abb. 1-3: Bohrfutterschutz - Drilling chuck protection

1.7.1 Schaltbox - Switch box

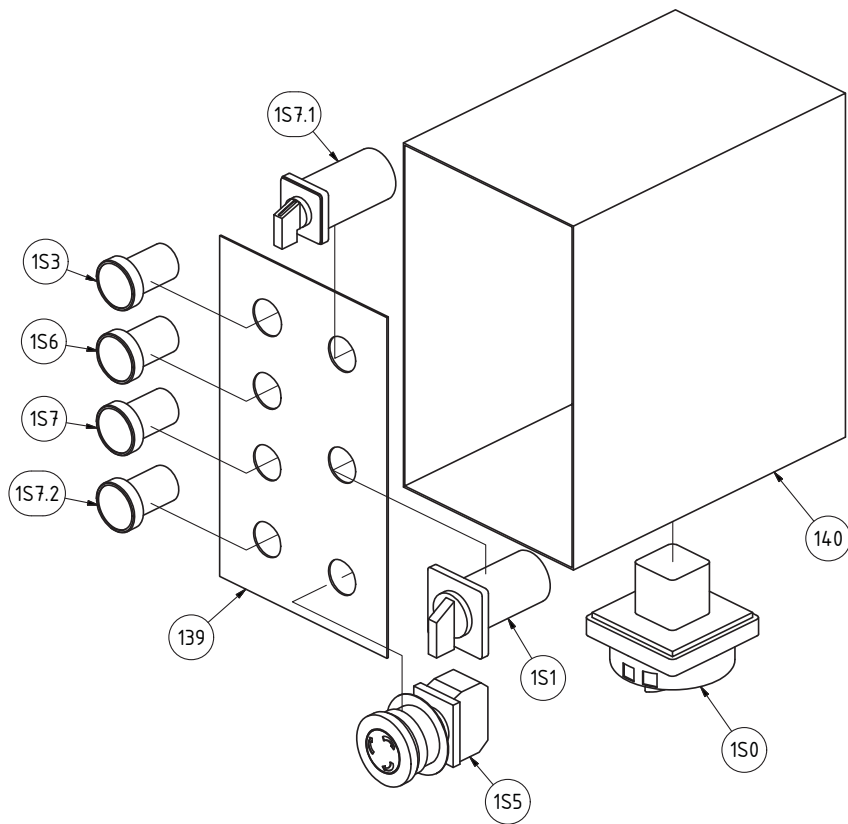


Abb. 1-4: Schaltbox - Switch box

1.7.2 Säule und Bohrtisch - Column and drilling table

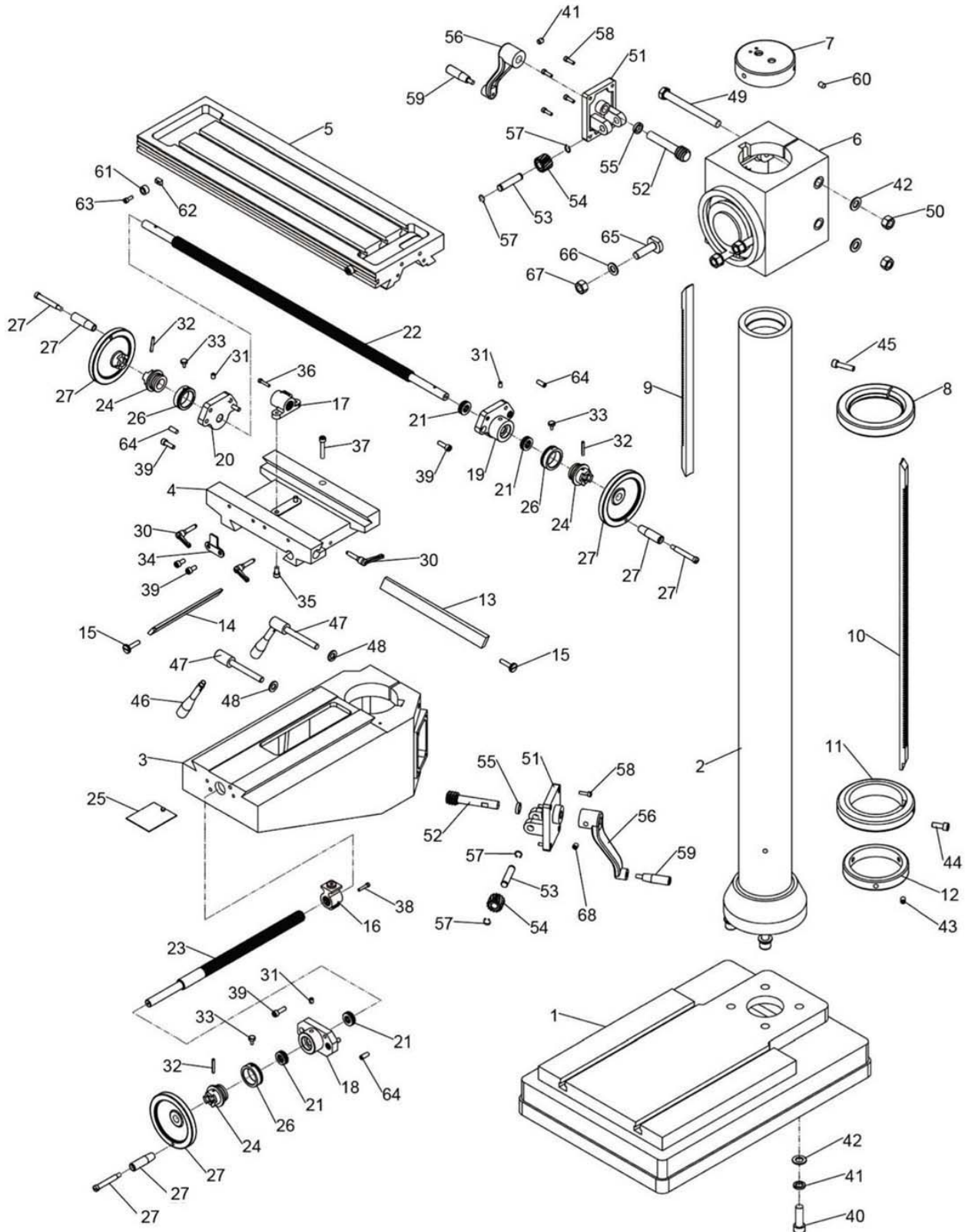


Abb. 1-5: Säule und Bohrtisch - Column and drilling table

DH40CT_DH40CTP_parts.fm

1.7.3 Teileliste Säule und Bohrtisch - Parts list column, column and drilling table

| DH40CT DH40CTP - Bohrtisch - drilling table | | | | | |
|---|------------------|-------------------|-------|--------|---------------|
| Pos. | Bezeichnung | Designation | Menge | Grösse | Artikelnummer |
| | | | Qty. | Size | Item no. |
| 1 | Maschinenfuss | Base | 1 | | 03034350201 |
| 2 | Säule | Column | 1 | | 03034350202 |
| 3 | Tischhalter | Lifting table | 1 | | 03034350203 |
| 4 | Schlitten | Slip saddle | 1 | KT210 | 0335660010 |
| 5 | Bohrtisch | Work table | 1 | KT210 | 0335660034 |
| 6 | Gehäuse | Elevating body | 1 | | 03034350206 |
| 7 | Abdeckung | Cover | 1 | | 03034350207 |
| 8 | Ring | Locked guide ring | 1 | | 03034350208 |
| 9 | Zahnstange | Up rack | 1 | | 03034350209 |
| 10 | Zahnstange | Low rack | 1 | | 03034350210 |
| 11 | RIng | Guide ring | 1 | | 03034350211 |
| 12 | Ring | Fixed ring | 1 | | 03034350212 |
| 13 | Keilleiste | Gib strip | 1 | KT210 | 0335660008 |
| 14 | Keilleiste | Gib strip | 1 | KT210 | 0335660026 |
| 15 | Einstellschraube | Adjust screw | 2 | KT210 | 0335660009 |
| 16 | Spindelmutter | Guide screw nut | 1 | KT210 | 0335660022CPL |
| 17 | Spindelmutter | Guide screw | 1 | KT210 | 0335660007CPL |
| 18 | Lagerbock | Bearing klock | 1 | KT210 | 0335660019 |
| 19 | Lagerbock | Bearing klock | 1 | KT210 | 0335660037 |
| 20 | Lagerbock | Bearing klock | 1 | KT210 | 0335660020 |
| 21 | Axiallager | Thrust bearing | 4 | 51103 | 04051103 |
| 22 | Spindel | Lead Screw | 1 | KT210 | 0335660007CPL |
| 23 | Spindel | Lead Screw | 1 | KT210 | 0335660022CPL |
| 24 | Kupplung | Dial clutch | 2 | KT210 | 0335660016 |
| 25 | Abdeckung | Way cover | 1 | | 03034350225 |
| 26 | Skalering | Scale ring | 3 | KT210 | 0335660017 |
| 27 | Handrad | Handwheel | 3 | KT210 | 0335660015 |
| 30 | Spannhebel | Clamping lever | 2 | M8x50 | 0335660012 |
| 31 | Schmiernippel | Oil cup | 3 | 8 | 0340114 |
| 32 | Stift | Pin | 3 | 5x35 | |
| 33 | Schraube | Screw | 3 | | |
| 34 | Block | Fixed block | 1 | KT210 | 0335660014 |
| 35 | Schraube | Screw | 2 | M8x16 | |
| 36 | Schraube | Screw | 1 | M5x25 | |
| 37 | Schraube | Screw | 1 | M8x45 | |
| 38 | Schraube | Screw | 1 | M5x25 | |
| 39 | Schraube | Screw | 8 | M8x20 | |
| 40 | Bolzen | Bolt | 4 | M16x50 | |
| 41 | Scheibe | Lock washer | 4 | 16 | |
| 42 | Scheibe | Washer | 6 | 16 | |

DH40CT_DH40CTP_parts.fm

| | | | | | |
|----|-----------------|---------------------|---|---------|-------------|
| 43 | Schraube | Screw | 3 | M10x20 | |
| 44 | Schraube | Screw | 2 | M10x20 | |
| 45 | Schraube | Screw | 1 | M10x40 | |
| 46 | Handhebel | Handle | 2 | | 03034350246 |
| 47 | Einstellbolzen | Adjust bolt | 2 | | 03034350247 |
| 48 | Scheibe | Washer | 2 | 12 | |
| 49 | Bolzen | Bolt | 2 | M16x190 | |
| 50 | Sechskantmutter | Nut | 2 | 16 | |
| 51 | Halter | Bracket | 2 | | 03034350251 |
| 52 | Schneckenwelle | Worm shaft | 2 | | 03034350252 |
| 53 | Welle | Small shaft | 2 | | 03034350253 |
| 54 | Zahnrad | Helical gear | 2 | | 03034350254 |
| 55 | Scheibe | Washer | 2 | | |
| 56 | Kurbel | Crank | 2 | | 03034350256 |
| 57 | Sicherungsring | Retaining ring | 4 | | |
| 58 | Schraube | Screw | 8 | M6x25 | |
| 59 | Handhebel | Turn handle | 2 | | 03034350259 |
| 60 | Schraube | Screw | 3 | M8x12 | |
| 61 | Endanschlag | Fixed block support | 2 | | |
| 62 | Sechskantmutter | Nut | 2 | M6x25 | |
| 63 | Schraube | Screw | 2 | M6x16 | |
| 64 | Stift | Pin | 6 | 8x25 | |
| 65 | T-Schraube | T-bolt | 3 | M14x55 | 03034350265 |
| 66 | Scheibe | Washer | 3 | 14 | |
| 67 | Sechskantmutter | Nut | 3 | M14 | |
| 68 | Gewindestift | Grub screw | 3 | | 03034350268 |
| 67 | Sechskantmutter | Nut | 3 | M14 | |
| 68 | Gewindestift | Grub screw | 3 | | 03034350268 |

1.8 Schaltplan - Wiring diagram

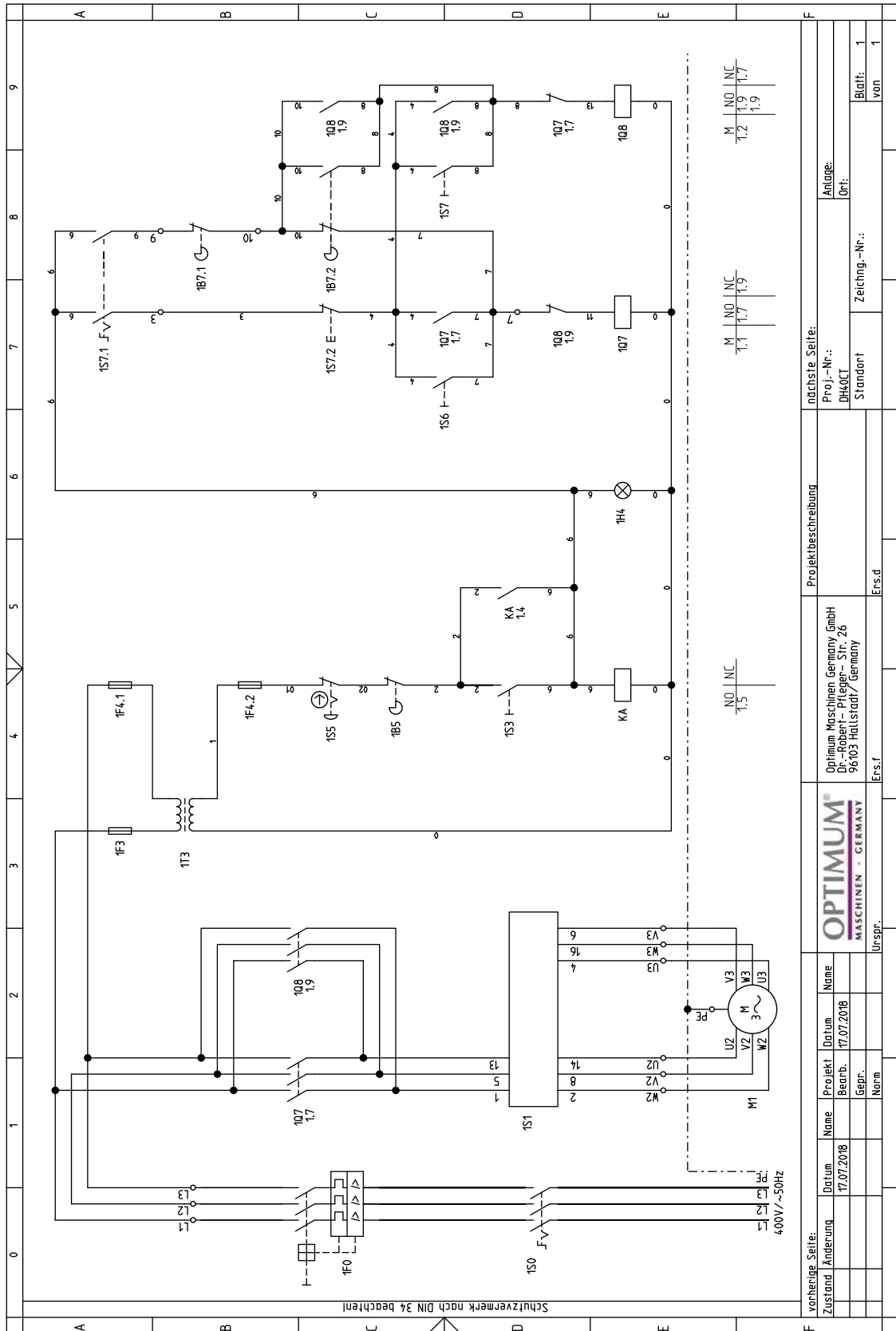









Abb.1-6: Schaltplan - Wiring diagram-

DH40CT_DH40CTP_parts.fm

1.8.1 Teileliste Elektrik - Parts list electrical components

| Teileliste Elektrik - Parts list electrical components | | | | | |
|--|---------------------------|-----------------------|-------|--------|---------------|
| Pos. | Bezeichnung | Designation | Menge | Grösse | Artikelnummer |
| | | | Qty. | Size | Item no. |
| 1B5 | Schalter Bohrfutterschutz | Drill cover switch | | | |
| 1B7.1 | Endschalter oben | Top limit switch | | | |
| 1B7.2 | Endschalter unten | Down limit switch | | | |
| 1F0 | Schutzschalter | Safety switch | | | |
| 1F3 | Sicherung | Fuse | | | |
| 1F4.1 | Sicherung | Fuse | | | |
| 1F4.2 | Sicherung | Fuse | | | |
| 1H4 | Lampe Betriebsleuchte | Work light lamp | | | 0302024169 |
| 1Q7 | Motorschütz | Motor contactor | | | 0460020 |
| 1Q8 | Motorschütz | Motor contactor | | | 0460020 |
| 1S1 | Drehrichtungsschalter | Change over switch | | | 03034503SA1 |
| 1S3 | Taster Ein | ON button | | | 0302024185 |
| 1S5 | Not-Halt-Schalter | Emergency stop button | | | 0460049 |
| 1S6 | Taster Vorwärts | Button CW rotation | | | |
| 1S7 | Taster Rückwärts | Button CCW rotation | | | |
| 1S7.1 | Funktionsschalter | Functional switch | | | 03034503SA1 |
| 1S7.2 | Taster Aus | OFF switch | | | 0460001 |
| 1T3 | Transformator | Transformer | | | 033384501T3 |
| KA | Steuerrelais | Control relais | | | 03336110KA1 |
| M1 | Motor | Motor | | | 0303434034 |
| 1S0 | Hauptschalter | Main switch | | | 0460010 |

oil-compare-list.fm

| Schmierstoffe Lubricant Lubrifiant | Viskosität Viscosity Viscosité ISO VG DIN 51519 mm ² /s (cSt) | Kennzeichnung nach DIN 51502 |  |  |  |  |  |  |  |
|---|--|------------------------------------|--|---|---|---|---|---|---|
| Getriebeöl Gear oil Huile de réducteur | VG 680 | CLP 680 | Aral Degol BG 680 | BP Energol GR-XP 680 | SPARTAN EP 680 | Klüberoil GEM 1-680 | Mobilgear 636 | Shell Omala 680 | Meropa 680 |
| | VG 460 | CLP 460 | Aral Degol BG 460 | BP Energol GR-XP 460 | SPARTAN EP 460 | Klüberoil GEM 1-460 | Mobilgear 634 | Shell Omala 460 | Meropa 460 |
| | VG 320 | CLP 320 | Aral Degol BG 320 | BP Energol GR-XP 320 | SPARTAN EP 320 | Klüberoil GEM 1-320 | Mobilgear 632 | Shell Omala 320 | Meropa 320 |
| | VG 220 | CLP 220 | Aral Degol BG 220 | BP Energol GR-XP 220 | SPARTAN EP 220 | Klüberoil GEM 1-220 | Mobilgear 630 | Shell Omala 220 | Meropa 220 |
| | VG 150 | CLP 150 | Aral Degol BG 150 | BP Energol GR-XP 150 | SPARTAN EP 150 | Klüberoil GEM 1-150 | Mobilgear 629 | Shell Omala 150 | Meropa 150 |
| | VG 100 | CLP 100 | Aral Degol BG 100 | BP Energol GR-XP 100 | SPARTAN EP 100 | Klüberoil GEM 1-100 | Mobilgear 627 | Shell Omala 100 | Meropa 100 |
| | VG 68 | CLP 68 | Aral Degol BG 68 | BP Energol GR-XP 68 | SPARTAN EP 68 | Klüberoil GEM 1-68 | Mobilgear 626 | Shell Omala 68 | Meropa 68 |
| | VG 46 | CLP 46 | Aral Degol BG 46 | BP Bartran 46 | NUTO H 46 (HLP 46) | Klüberoil GEM 1-46 | Mobil DTE 25 | Shell Tellus S 46 | Anubia EP 46 |
| | VG 32 | CLP 32 | Aral Degol BG 32 | BP Bartran 32 | NUTO H 32 (HLP 32) | Klübersynth GEM 4- 32 N | Mobil DTE 24 | Shell Tellus S 32 | Anubia EP 32 |
| Hydrauliköl Hydraulic oil Huile hydraulique | VG 32 | CLP 32 | Aral Vitam GF 32 | BP Energol HLP HM 32 | NUTO H 32 (HLP 32) | LAMORA HLP 32 | Mobil Nuto HLP 32 | Shell Tellus S2 M 32 | Rando HD HLP 32 |
| | VG 46 | CLP 46 | Aral Vitam GF 46 | BP Energol HLP HM 46 | NUTO H 46 (HLP 46) | LAMORA HLP 46 | Mobil Nuto HLP 46 | Shell Tellus S2 M 46 | Rando HD HLP 46 |
| Getriebefett Gear grease Graisse de réducteur | | G 00 H-20 | Aral FDP 00 (Na-verseift) Aralub MFL 00 (Li-verseift) | BP Energol PR-EP 00 | FIBRAX EP 370 (Na-verseift) | MICRO-LUBE GB 00 | Mobilux EP 004 | Shell Alvania GL 00 (Li-verseift) | Marfak 00 |

| | | | | | | | | | |
|---|---|---------------------------|------------------------|--------------------------|-------------------------|--|---------------------------------------|-------------------------------|--------------------------|
| Spezialfette, wasserabweisend Special greases, water resistant Graisses spéciales, déperlant | | | Aral Aralub | Energrease PR 9143 | | ALTEMP Q NB 50 Klüberpaste ME 31-52 | Mobilux EP 0 Mobil Greaserex 47 | | |
| Wälzlagerfett Bearing grease Graisse de roulement | | K 3 K-20 (Li-verseift) | Aralub HL 3 | BP Energrease LS 3 | BEACON 3 | CENTOPLEX 3 | Mobilux 3 | Shell Alvania R 3 Alvania G 3 | Multifak Premium 3 |
| Öle für Gleitbahnen Oils for slideways Huiles pour glissières | VG 68 | CGLP 68 | Aral Deganit BWX 68 | BP Maccurat D68 | ESSO Febis K68 | LAMORA D 68 | Mobil Vactra Oil No.2 | Shell Tonna S2 M 68 | Way lubricant X 68 |
| Öle für Hochfrequenzspindeln Oils for Built-in spindles Huiles pour broches à haute vitesse | VG 68 | | Deol BG 68 | Emergol HLP-D68 | Spartan EP 68 | | Drucköl KLP 68-C | Shell Omala 68 | |
| Fett für Zentralschmierung (Fließfett) Grease for central lubrication Graisse pour lubrification centrale | NLGI Klasse 000 NLGI class 000 | | ARALUB BAB 000 | Grease EP 000 | Shell Gadus S4 V45AC | CENTOPLEX GLP 500 | Mobilux EP 023 | | Multifak 264 EP 000 |
| Fett für Hochfrequenzspindeln Grease for Built-in spindles Graisse pour broches à haute vitesse | <p>METAFLUX-Fett-Paste (Grease paste) Nr. 70-8508 METAFLUX-Moly-Spray Nr. 70-82 Techno Service GmbH ; Detmolder Strasse 515 ; D-33605 Bielefeld ; (++49) 0521- 924440 ; www.metaflux-ts.de</p> | | | | | | | | |
| Kühlschmiermittel Cooling lubricants Lubrifiants de refroidissement | Schneidöl Aquacut C1, 10 L Gebinde, Artikel Nr. 3530030 EG Sicherheitsdatenblatt http://www.optimum-daten.de/data-sheets/Optimum-Aquacut_C1-EC-datasheet_3530030_DE.pdf | | Aral Emusol | BP Sevora | Esso Kutwell | | Mobilcut | Shell Adrana | Chevron Soluble Oil B |